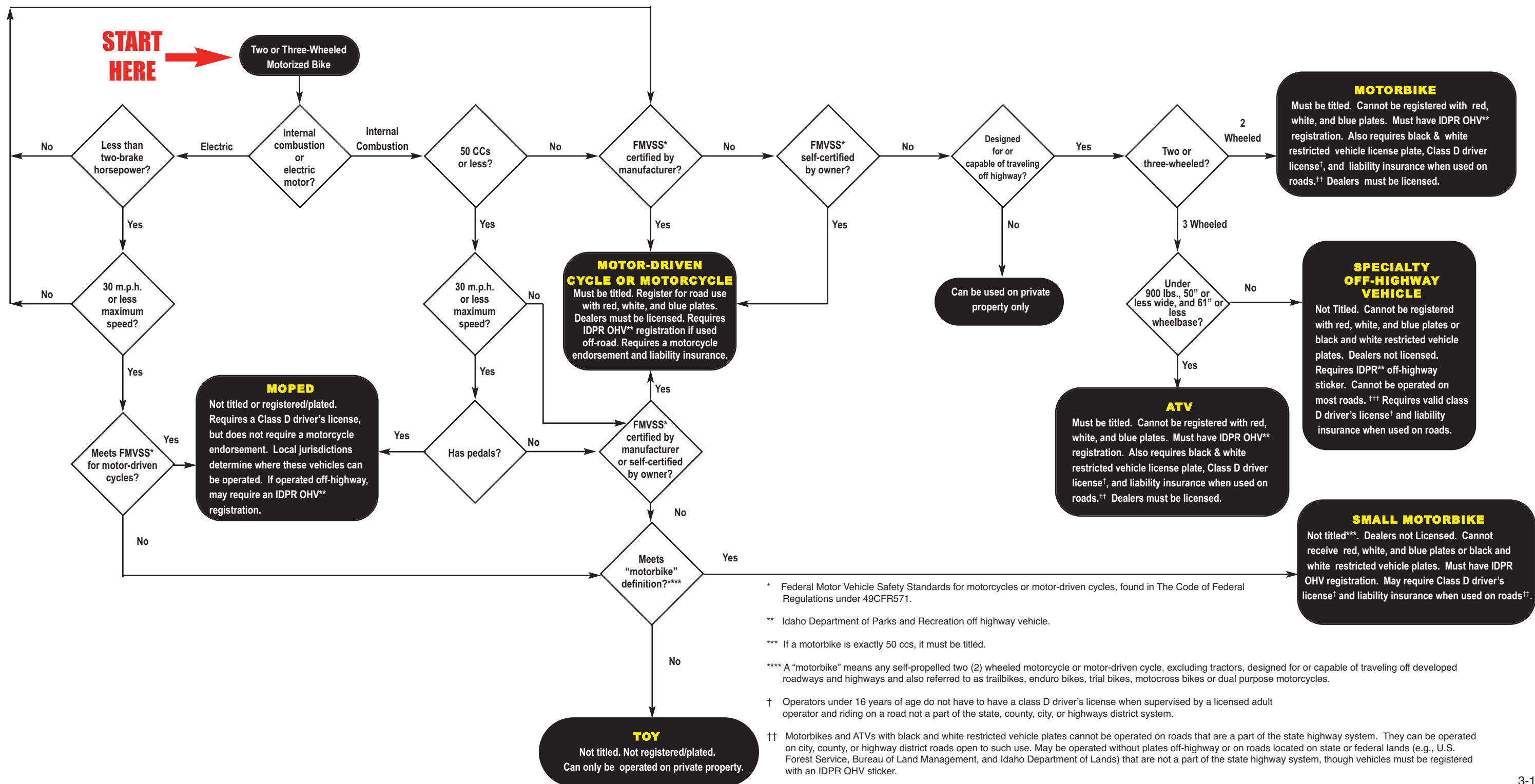




Identification Chart for Motorized Vehicles with Two or Three Wheels



* Federal Motor Vehicle Safety Standards for motorcycles or motor-driven cycles, found in The Code of Federal Regulations under 49CFR571.

** Idaho Department of Parks and Recreation off highway vehicle.

*** If a motorbike is exactly 50 ccs, it must be titled.

**** A "motorbike" means any self-propelled two (2) wheeled motorcycle or motor-driven cycle, excluding tractors, designed for or capable of traveling off developed roadways and highways and also referred to as trailbikes, enduro bikes, trial bikes, motocross bikes or dual purpose motorcycles.

† Operators under 16 years of age do not have to have a class D driver's license when supervised by a licensed adult operator and riding on a road not a part of the state, county, city, or highways district system.

†† Motorbikes and ATVs with black and white restricted vehicle plates cannot be operated on roads that are a part of the state highway system. They can be operated on city, county, or highway district roads open to such use. May be operated without plates off-highway or on roads located on state or federal lands (e.g., U.S. Forest Service, Bureau of Land Management, and Idaho Department of Lands) that are not a part of the state highway system, though vehicles must be registered with an IDPR OHV sticker.

††† Specialty off-highway vehicles cannot be operated on any road that is a part of the state highway system or any county, city, or highway district roads. They can only be operated off-highway or on roads located on state or federal lands (e.g., U.S. Forest Service, Bureau of Land Management, and Idaho Department of